

Waste King

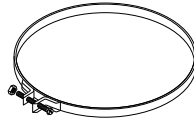
COMMERCIAL

by Anaheim Manufacturing

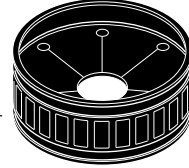
PHONE: (800) 854-3229 • FAX: (800) 454-4406
www.wasteking.com

PARTS LIST MODEL 10000-3/38S FROM 1/82

CLAMP (2)
01-20-135

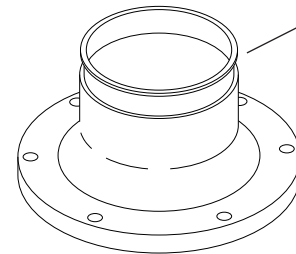
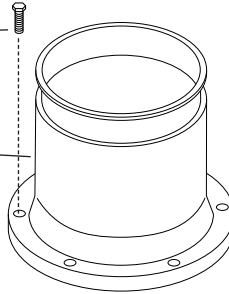


HUSH CUSHION
01-20-023



SCREW (8)
00-57-234

UPPER HOUSING
MODEL-3
01-22-898



UPPER HOUSING
MODEL-38S
01-22-899

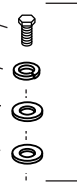
SCREW 09-01-540**

WASHER 01-22-730**

WASHER 01-22-438**

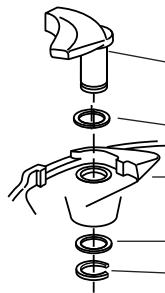
RUBBER WASHER
01-35-055**

TURNTABLE ASSEMBLY
01-22-625
Starts w/ serial #850200146
(Includes Cutter Blade Kit
and Impeller Kit)



SCREW KIT**
01-22-737

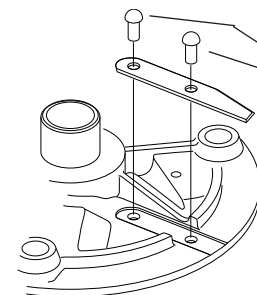
IMPELLER DETAIL



IMPELLER (3) KIT
00-86-538**
(Includes Swivel Impeller,
Spacer & Crimp Washer)

SWIVEL
IMPELLER
THRUST WASHER
FORWARD
IMPELLER STOP
SPACER
CRIMP WASHER

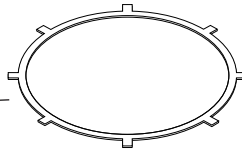
CUTTER BLADE DETAIL (TURNTABLE SHOWN UPSIDE-DOWN)



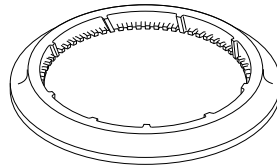
CUTTER BLADE KIT
01-20-947**
(Includes Rivets & Blade)

RIVETS
BLADE
TURNTABLE

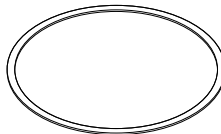
UPPER GASKET
269P047P01



GRIND RING
00-55-143



LOWER GASKET
269P045P01



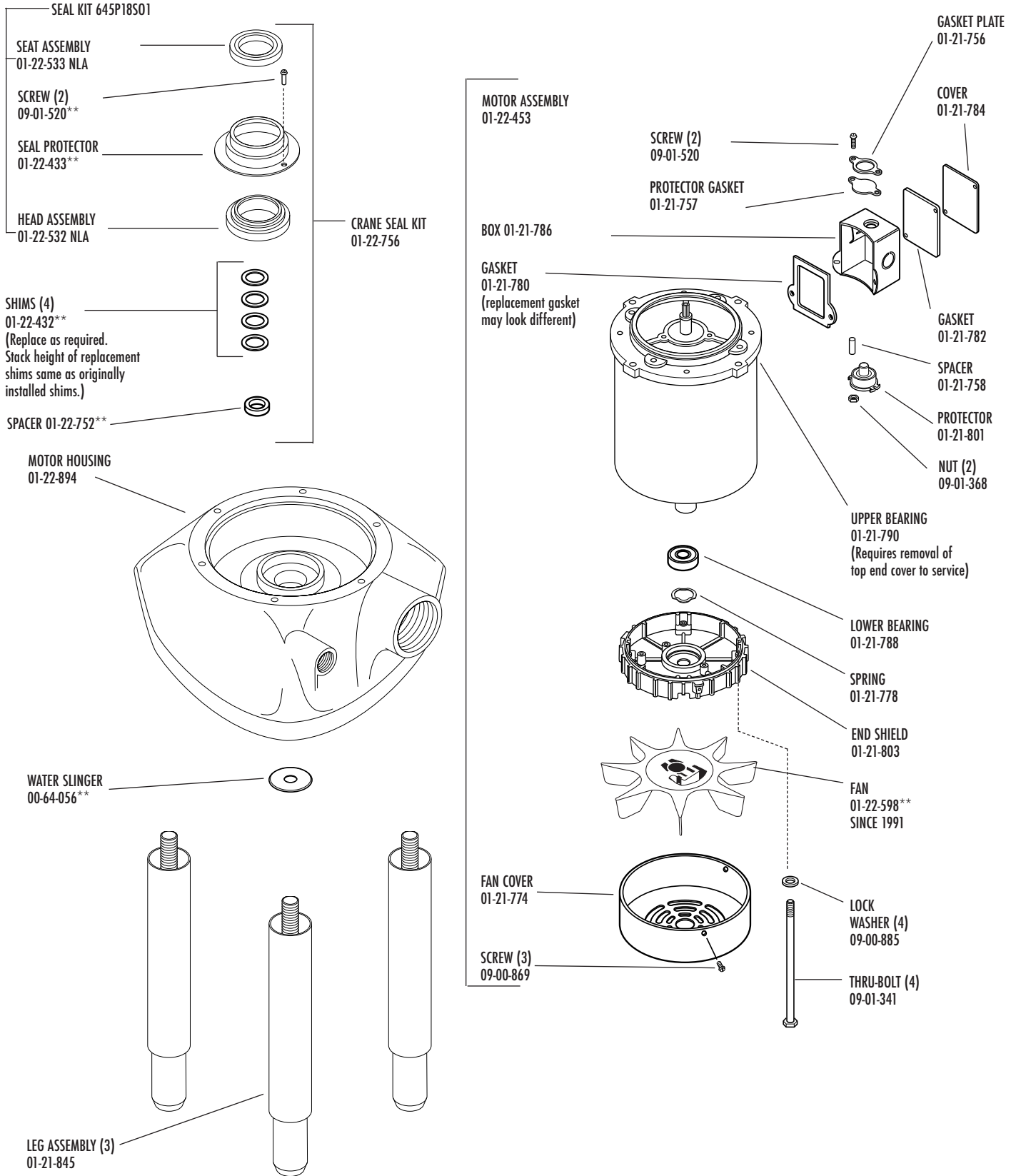
Due to continued product improvement, product configurations, parts and specifications may change without notice.
Please call before ordering.

* LIMITED QTY. AVAILABLE

** ALSO AVAILABLE SEPARATELY

(NLA) NO LONGER AVAILABLE

WKC-1318A REV 08/11



Due to continued product improvement, product configurations, parts and specifications may change without notice. Please call before ordering.